

**AQUA COOL<sup>®</sup>**  
COOLING TOWER



**SIDDHANT**  
EQUIPMENTS PVT. LTD.



QUALITY IN EVERYTHING WE DO !

[www.aquacoolcoolingtower.com](http://www.aquacoolcoolingtower.com)



## Company Profile

We, **Siddhant Equipments Pvt. Ltd.** (SEPL Pune), under our reputed **AQUACOOL** brand, are a leading manufacturer of advanced cooling systems for the evaporative cooling of water, industrial liquids and refrigerant gases.

Since 2000, we have been delivering customized, energy-efficient, and durable cooling solutions across diverse industries. Our product range includes open and closed loop cooling towers, evaporative condensers, and hybrid coolers, available in Metal or GRP constructions with axial or centrifugal fans to suit varied operational needs.

Supported by a dedicated technical team and a strong sales network, we continually innovate in design, materials, and manufacturing to provide reliable, high-performance solutions that meet the evolving demands of modern industry.

With over 4500 installations across India and overseas, our systems continue to serve diverse industrial sectors with proven performance and trust.



## Core Purpose

To make a technical contribution in developing innovative products that benefit process efficiency, thereby adding value and improving life.

## Core Values

- Integrity & Honesty at par
- Innovation at its best
- Hard work & Self Improvement
- Service to the Customer above all
- Encouraging Individual Productivity



## Vision

To transform our company from a small equipments manufacturer into one of the best diversified high technology company.





**SIDDHANT**  
EQUIPMENTS PVT. LTD.

# Q

## Manufacturing Precision & Quality Assurance

We, **Siddhant Equipments Pvt. Ltd.** follow a robust, standards-driven approach in manufacturing Closed Loop Cooling Towers.

Each unit is fabricated using high-grade, corrosion-resistant materials, with all welds, joints and assemblies inspected under stringent QA/QC protocols.

Our production processes adhere to ISO and ASME practices, incorporating hydrostatic testing,

vibration analysis and thermal performance validation.

Advanced CNC fabrication and automated finishing ensure dimensional accuracy and consistency across all models.

This disciplined approach guarantees optimal heat transfer efficiency, low maintenance requirements and extended service life in the most challenging operating conditions.

**COLD  
STORAGE**



**ENERGY &  
CHEMICAL**



**POWER**



**STEEL**



**INDUSTRIES  
AND  
APPLICATIONS**

**COMFORT  
AIRCONDITIONING**



**INDUSTRIAL  
REFRIGERATION**



**FOOD & BEVERAGES**



**PHARMACEUTICAL**



# CROSS FLOW AQ BHX SERIES



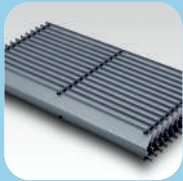
**AC/EC FAN**  
Protection Class IP55/56/65/66,  
Low Energy Consumption  
Multi-Wing/PAG



**NOZZLE**  
ABS/PP



**COIL**  
Round Tube/  
Oval Tube/  
HDG Steel/  
SS304/SS316L



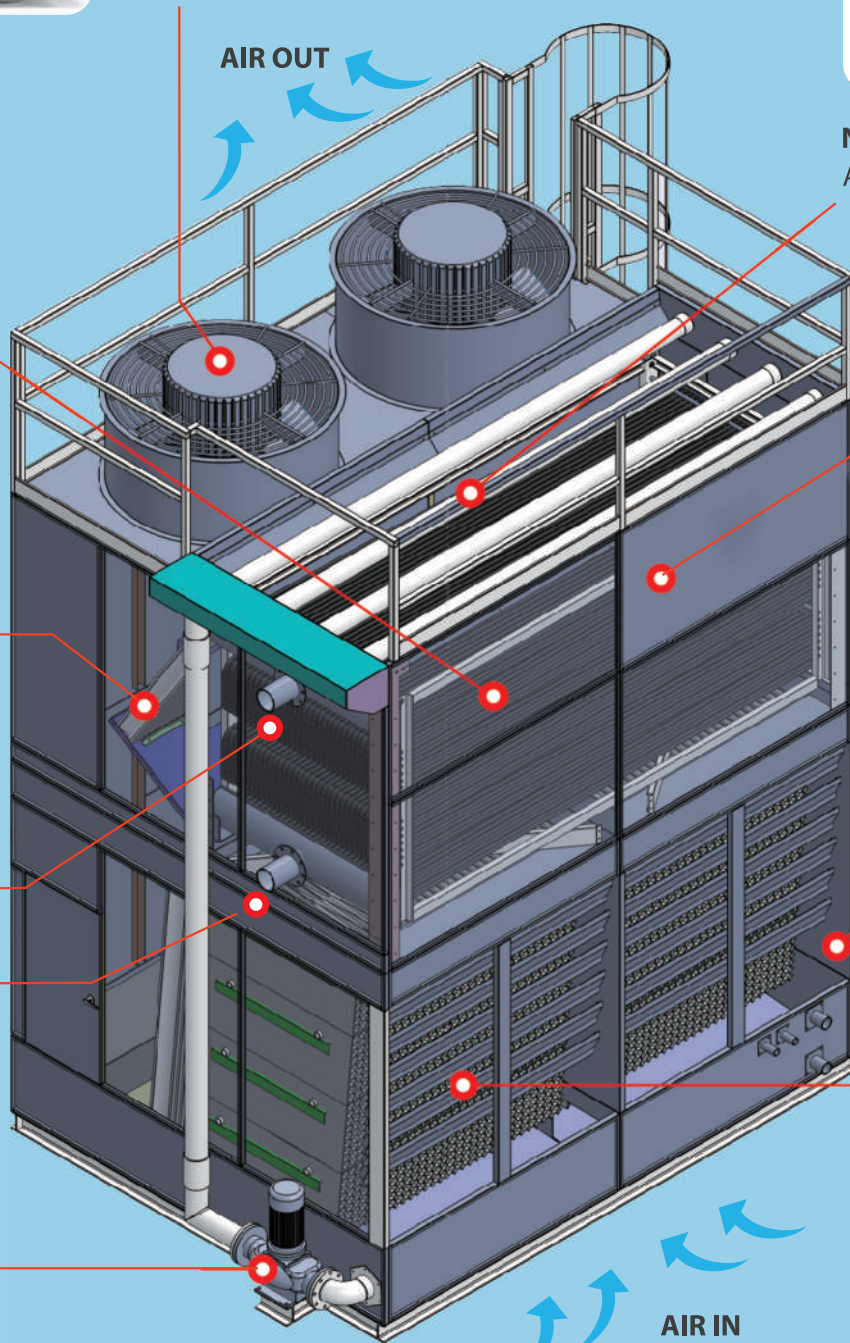
**DRIFT ELIMINATOR**  
PVC (W-Type)/  
Honeycomb Type

Process Water  
Inlet

Process Water  
Outlet



**SPRAY WATER PUMP**  
KSB/CRI/Cast Iron/SS304/SS316L



**CASING**  
AZ180/ZAM/  
SS304/SS316L



**AIR-INLET  
LOUVER**  
AZ180/ZAM/  
SS304/SS316L

**FILLS**  
PVC/PP

**AIR IN**

**AIR OUT**



## OUR VARIOUS INSTALLATIONS



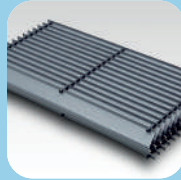
## SELECTION CHART

Model	Nominal water flow (m <sup>3</sup> /h)	Fan			Spray water pump			Inlet & Outlet pipe DN (mm)	Weight (Kg)		Dimensions (mm)		
		Unit	Power (kw)	Fan Capacity (m <sup>3</sup> /h)	Unit	Power (kw)	Flow rate (m <sup>3</sup> /h)		Shipping	Operating	Length	Width	Height
AQ-BHX-30	30	1	3	46000	1	1.1	53	DN80/DN80	2390	3790	1925	2380	4570
AQ-BHX-40	40	1	4	60000	1	1.1	53	DN100/DN100	2510	3910	1925	2380	4570
AQ-BHX-50	50	1	5.5	65000	1	1.5	70	DN100/DN100	2760	4340	1925	2580	4570
AQ-BHX-60	60	1	5.5	75000	1	1.5	70	DN100/DN100	3290	5140	1925	2980	4570
AQ-BHX-70	70	1	7.5	87000	1	1.5	70	DN100/DN100	3680	5530	1925	2980	4800
AQ-BHX-80	80	2	4	2*45000	1	2.2	100	DN100/DN100	4230	7650	3770	2200	4570
AQ-BHX-90	90	2	4	2*45000	1	2.2	100	DN125/DN125	4510	7930	3770	2200	5070
AQ-BHX-100	100	2	4	2*45000	1	2.2	100	DN125/DN125	4620	8040	3770	2200	5315
AQ-BHX-110	110	3	4	3*45000	1	3	150	DN125/DN125	6170	10170	4240	2200	5070
AQ-BHX-125	125	3	4	3*45000	1	3	150	DN125/DN125	6510	10510	4240	2200	5315
AQ-BHX-135	135	4	4	4*45000	1	4	180	DN125/DN125	7100	11950	5610	2200	4570
AQ-BHX-150	150	4	4	4*45000	1	4	180	DN125/DN125	7310	12160	5610	2200	5080
AQ-BHX-165	165	4	4	4*45000	1	4	180	DN125/DN125	7590	12440	5610	2200	5315
AQ-BHX-180	183	4	4	4*45000	1	5.5	230	2-DN125/2-DN125	8920	15580	7450	2200	4570
AQ-BHX-200	200	4	4	4*45000	1	5.5	230	2-DN125/2-DN125	9330	15990	7450	2200	5070
AQ-BHX-225	226	4	4	4*45000	1	5.5	230	2-DN125/2-DN125	9550	16210	7450	2200	5315
AQ-BHX-250	250	5	4	5*45000	2	2*3	2*150	2-DN125/2-DN125	11650	19090	9300	2200	5070
AQ-BHX-265	265	5	4	5*45000	2	2*3	2*150	2-DN125/2-DN125	12350	19790	9300	2200	5315
AQ-BHX-280	280	6	4	6*45000	2	2*3	2*150	2-DN125/2-DN125	12490	19930	9300	2200	5315
AQ-BHX-300	300	6	4	6*45000	2	2*4	2*180	2-DN125/2-DN125	13410	20220	10400	2200	5315

1. Nominal flow rate is the cooling capacity of closed loop cooling tower when wet bulb temperature is 28°C, inlet water temperature is 37°C, outlet water temperature is 32°C
2. Data in table above may change due to the innovation of technology, please refer to the latest details parameters provided by SEPL.
3. AQ BHX series closed loop cooling tower are not limited to the above models, please contact with us for other requirements.
4. The specifications are subject to change without further notice for technical improvement of our products.

# COUNTER FLOW AQ BNX SERIES

**DRIFT ELIMINATOR**  
PVC (W-Type)/  
Honeycomb Type



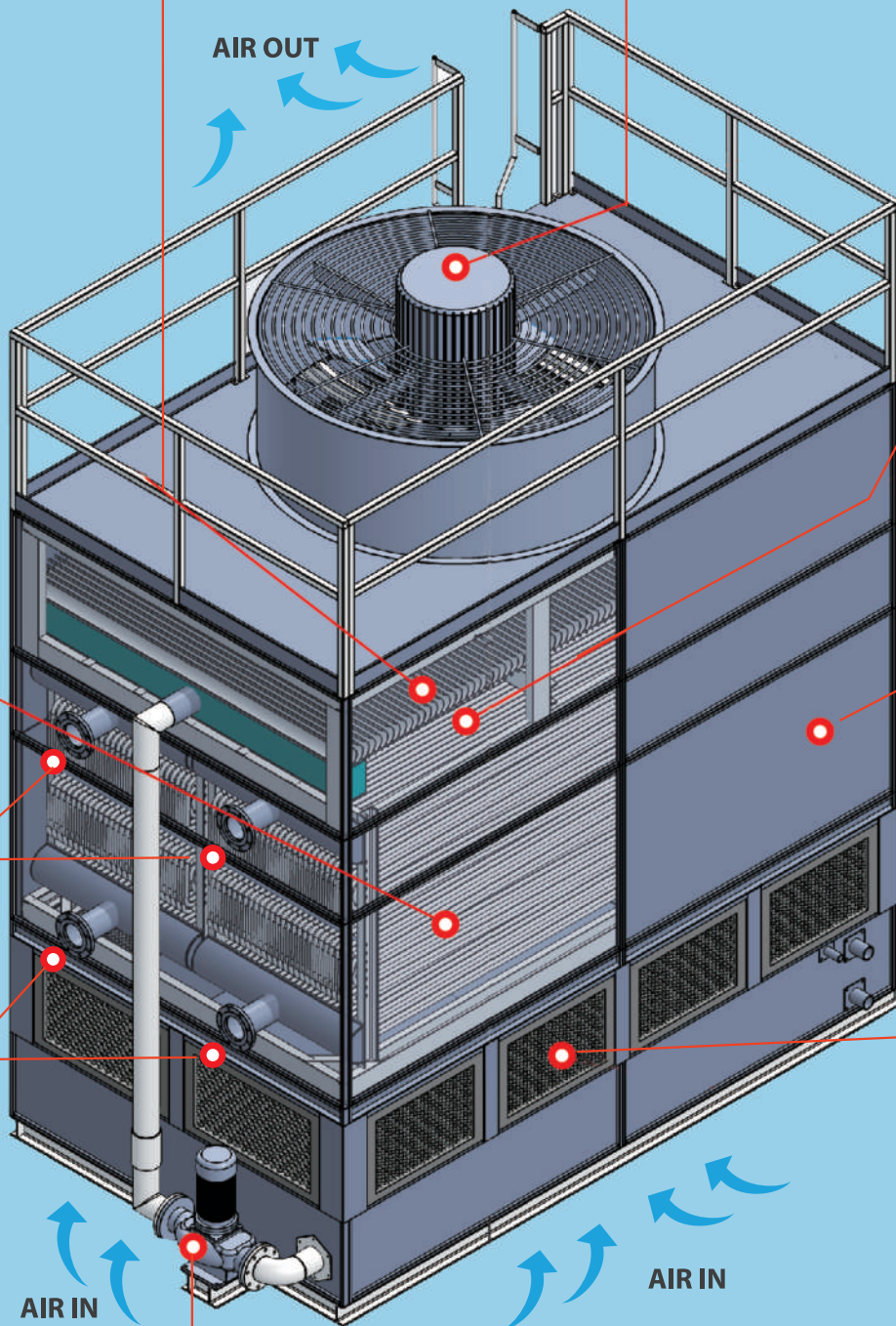
**AC/EC FAN**  
Protection Class IP55/  
56/65/66, Low Energy  
Consumption  
Multi-Wing/PAG



**COIL**  
Round Tube/  
Oval Tube/  
HDG Steel/  
SS304/SS316L



**NOZZLE**  
ABS/PP



**CASTING**  
AZ180/ZAM/  
SS304/SS316L

**AIR-INLET LOUVER**  
AZ180/ZAM/  
SS304/SS316L



**SPRAY WATER PUMP**  
KSB/CRI/Cast Iron/SS304/SS316L



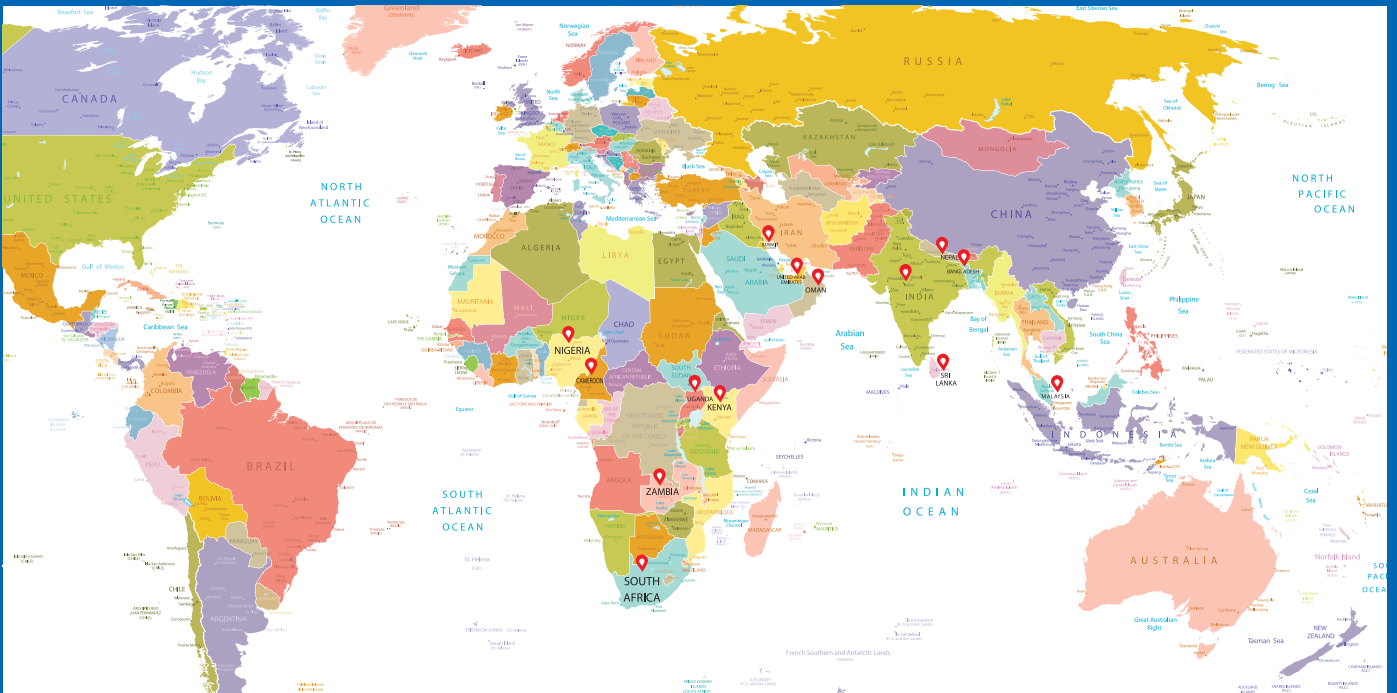
## OUR VARIOUS INSTALLATIONS



## SELECTION CHART

Model	Nominal water flow (m <sup>3</sup> /h)	Fan			Spray water pump			Inlet & Outlet pipe DN (mm)	Weight (Kg)		Dimensions (mm)		
		Unit	Power (kw)	Fan Capacity (m <sup>3</sup> /h)	Unit	Power (kw)	Flow rate (m <sup>3</sup> /h)		Shipping	Operating	Length	Width	Height
AQ-BNX-07	8	1	0.75	15000	1	0.37	16	DN50/DN50	860	1630	1230	1150	3530
AQ-BNX-10	12	1	1.5	18000	1	0.55	23	DN50/DN50	890	1660	1230	1150	3790
AQ-BNX-20	21	1	2.2	30000	1	0.75	28	DN50/DN50	1370	2480	1925	1150	4000
AQ-BNX-30	33	1	3	45000	1	1.1	53	DN80/DN80	1990	3620	1925	1840	4190
AQ-BNX-40	43	1	4	60000	1	1.1	53	DN80/DN80	2120	3790	1925	1840	4570
AQ-BNX-50	51	1	5.5	75000	1	1.5	70	DN100/DN100	2420	4490	2470	1840	4570
AQ-BNX-60	61	1	7.5	87000	1	1.5	70	DN100/DN100	2690	4760	2470	1840	4800
AQ-BNX-70	70	1	7.5	100000	1	2.2	84	DN100/DN100	3650	6080	2790	1840	4800
AQ-BNX-80	80	2	4	2*65000	1	2.2	100	DN125/DN125	4150	7480	3770	1840	4370
AQ-BNX-90	90	2	4	2*65000	1	2.2	100	DN125/DN125	4680	8010	3770	1840	4570
AQ-BNX-100	100	2	4	2*65000	1	2.2	100	DN125/DN125	5120	8450	3770	1840	4800
AQ-BNX-110	110	2	5.5	2*75000	1	3	120	2-DN100/2-DN100	5360	9430	3770	2200	4570
AQ-BNX-125	125	2	5.5	2*75000	1	3	120	2-DN100/2-DN100	5980	10050	3770	2200	4800
AQ-BNX-135	135	2	5.5	2*87000	1	4	180	2-DN100/2-DN100	6230	11270	4846	2200	4700
AQ-BNX-150	150	2	7.5	2*100000	1	4	180	2-DN100/2-DN100	6560	11590	4846	2200	5000
AQ-BNX-165	165	3	4	3*65000	1	5.5	230	2-DN125/2-DN125	7850	13730	5610	2200	4700
AQ-BNX-180	183	3	5.5	3*75000	1	5.5	230	2-DN125/2-DN125	8450	14330	5610	2200	5000
AQ-BNX-200	200	3	5.5	3*80000	1	5.5	230	2-DN125/2-DN125	9180	15380	5610	2200	5030
AQ-BNX-225	225	3	7.5	3*87000	2	3	2*120	4-DN100/4-DN100	9780	17340	6510	2200	5000
AQ-BNX-250	250	4	5.5	4*75000	2	3	2*120	4-DN100/4-DN100	10860	18520	7230	2200	5000
AQ-BNX-265	265	4	5.5	4*75000	2	3	2*120	4-DN100/4-DN100	11480	20880	7450	2200	5000
AQ-BNX-280	280	4	5.5	4*75000	2	3	2*150	4-DN100/4-DN100	11720	21120	8050	2200	5315
AQ-BNX-300	300	4	7.5	4*87000	2	4	2*180	4-DN125/4-DN125	12580	22670	8640	2200	5315

1. Nominal flow rate is the cooling capacity of closed loop cooling tower when wet bulb temperature is 28°C, inlet water temperature is 37°C, outlet water temperature is 32°C
2. Data in table above may change due to the innovation of technology, please refer to the latest details parameters provided by SEPL.
3. AQ BNX series closed loop cooling tower are not limited to the above models, please contact with us for other requirements.
4. The specifications are subject to change without further notice for technical improvement of our products.



**INTERNATIONAL PRESENCE**

**ASIA**

India  
Armenia  
Bangladesh  
Nepal  
Sri Lanka  
Vietnam

**AFRICA**

Cameroon  
Kenya  
Nigeria  
South Africa  
Uganda  
Zambia

**MIDDLE EAST**

Kuwait  
Oman  
U.A.E



**OUR ESTEEMED CUSTOMERS**



SCAN TO DOWNLOAD THIS CATALOGUE



SCAN TO VISIT OUR WEBSITE

[www.aquacoolcoolingtower.com](http://www.aquacoolcoolingtower.com)



Manufactured & Marketed by :  
**SIDDHANT EQUIPMENTS PVT. LTD.**

Regd. Office : 504, 5th Floor, Amar Neptune, Behind Amar Apex, Baner Road, Pune – 411045  
Contact : 020 – 27291742 / +91 98223 22761  
E-mail : info@siddhantequipments.com / paragjain@aquacoolct.com  
Works : Gat No.- 566, Badalwadi, At post - Navlakh Umbre, Ambi MIDC Road, Pune - 410507